

DATE: 14 June 2022
DESIGNER: Alex Naper
PROJECT No: SES 05822 Rev E
PROJECT NAME: Kiltiernan Village SHD - Liscove Limited



Residential areas designed in accordance with EN13201-2:2015 Category P4.

Northern & Western access junction designed in accordance with EN13201-2:2015 Category C3.

Eastern access junction designed in accordance with EN13201-2:2015 Category C4.

Step sections designed in accordance with I.S.EN17210-2021 with illuminance levels as per the recommendations of BS8300-1:2018 Table 5 Stairways and ramps (open) in the external environment.

Rev C: Bollards added to Northern woodland section.

Rev D: Updated site layout & client name updated.

Rev E: Column 48A relocated.

Outdoor Lighting Report

PREPARED BY: Sabre Electrical Services Ltd.
Unit 11,
Bellview Industrial Estate,
Tolka Valley Road,
Dublin 11
Phone Number: 01 8110875
Contact: Graham Sheehan
eMail: graham@sabrelighting.ie

Layout Report

General Data

Dimensions in Metres Angles in Degrees

Calculation Grids

ID	Grid Name	X	Y	X' Length	Y' Length	X' Spacing	Y' Spacing
1	Grid 1	720462.00	722287.30	355.00	292.00	1.50	1.50
2	Grid 2	720565.16	722063.64	370.16	245.24	1.56	1.26
3	Grid 3	720499.48	722558.66	42.00	36.00	1.50	1.50
4	Grid 4	720612.31	722247.41	72.00	44.93	1.50	1.50
5	Grid 5	720650.73	722293.03	11.30	2.18	0.35	0.73
6	Grid 6	720615.72	722259.15	11.30	2.18	0.35	0.73
7	Grid 7	720419.35	722357.12	48.00	40.29	1.50	1.18
8	Grid 8	720528.59	722158.17	48.00	228.00	1.50	1.50
9	Grid 9	720556.72	722136.82	42.00	33.00	1.50	1.50
10	Grid 10	720802.99	722326.66	42.00	54.00	1.50	1.50
11	Grid 11	720571.72	722317.58	231.00	152.81	1.50	1.50

Luminaires

Luminaire A Data

Supplier	C U Phosco
Type	E950-28-P4A-727-C600-16W
Lamp(s)	727N
Lamp Flux (klm)	2.19
File Name	E950-28-P4A-727-C0600-16W.ies
Maintenance Factor	0.81
Imax70,80,90(cd/klm)	659.3, 183.1, 0.3
No. in Project	88

Luminaire B Data

Supplier	C U Phosco
Type	E950-28-P4A-727-C200-7W
Lamp(s)	727N
Lamp Flux (klm)	0.75
File Name	E950-28-P4A-727-C0200-7W.ies
Maintenance Factor	0.83
Imax70,80,90(cd/klm)	659.3, 183.1, 0.3
No. in Project	46

Luminaire C Data

Supplier	C U Phosco
Type	E950-28-F2A-730-C700-18W
Lamp(s)	730N
Lamp Flux (klm)	2.62
File Name	E950-28-F2A-730-C0700-18W.ies
Maintenance Factor	0.80
Imax70,80,90(cd/klm)	623.6, 113.9, 0.3
No. in Project	1

Luminaire D Data

Supplier	C U Phosco
Type	E950-28-A2A-727-C600-16W
Lamp(s)	727N
Lamp Flux (klm)	2.01
File Name	E950-28-A2A-727-C0600-16W.ies
Maintenance Factor	0.80
Imax70,80,90(cd/klm)	470.3, 22.7, 0.9
No. in Project	6

Luminaire Data

Luminaire E Data



Supplier	Urbis Schreder
Type	FLEXIA TOP 5305 Deep shape PC Back Light 10 LH351C@200mA WW
Lamp(s)	10 LH351C@200mA WW 727 230V
LampFlux(klm)/Colour	1.01 WW 2700K/70
File Name	FLEXIA TOP 5305 10 LH351C 200mA WW 727 7.4W 454802 Deep shape PC Back Li...
Maintenance Factor	0.87
Imax70,80,90(cd/klm)	673.0, 189.6, 44.3
No. in Project	8

Luminaire F Data



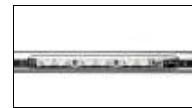
Supplier	Urbis Schreder
Type	AXIA 3.1 5296 Integrated lenses 8 OSOLON SQUARE GIANT@400mA
Lamp(s)	8 OSOLON SQUARE GIANT@400mA NW 740 230V
LampFlux(klm)/Colour	1.45 NW 4000K/70
File Name	AXIA 3.1 5296 8 OSOLON SQUARE GIANT 400mA NW 740 10.9W 436952 Integrated L...
Maintenance Factor	0.87
Imax70,80,90(cd/klm)	1243.8, 38.3, 0.0
No. in Project	2

Luminaire G Data



Supplier	Urbis Schreder
Type	AXIA 3.3 5295 Integrated lenses 64 OSOLON SQUARE GIANT@500mA
Lamp(s)	64 OSOLON SQUARE GIANT@500mA NW 740 230V
LampFlux(klm)/Colour	14.38 NW 4000K/70
File Name	AXIA 3.3 5295 64 OSOLON SQUARE GIANT 500mA NW 740 94W 441022 Integrated le...
Maintenance Factor	0.87
Imax70,80,90(cd/klm)	753.3, 15.9, 0.0
No. in Project	3

Luminaire H Data



Supplier	Urbis Schreder
Type	ALINEA Handrail 5121 - 3 LED 350mA WW Profiled Poly Clear, Sm
Lamp(s)	3 LEDs WW
Lamp Flux (klm)	0.37
File Name	ALINEA Handrail 5121 3 LED 350mA WW Profiled Poly Clear Smooth WO7314.Idt
Maintenance Factor	0.87
Imax70,80,90(cd/klm)	230.6, 22.2, 4.1
No. in Project	8

Luminaire I Data

Supplier	C U Phosco
Type	E951-64-H5-G-727-W5-0625-55W
Lamp(s)	727SS
Lamp Flux (klm)	7.38
File Name	E951-64-H5-G-727-W5-0625-55W.ies
Maintenance Factor	0.83
Imax70,80,90(cd/klm)	426.0, 72.1, 1.1
No. in Project	10

Luminaire J Data



Supplier	Urbis Schreder
Type	AXIA 3.3 5279 Integrated lenses 64 OSOLON SQUARE GIANT@600mA
Lamp(s)	64 OSOLON SQUARE GIANT@600mA NW 740 230V
LampFlux(klm)/Colour	16.29 NW 4000K/70
File Name	AXIA 3.3 5279 64 OSOLON SQUARE GIANT 600mA NW 740 113W 429344 Integrated L...
Maintenance Factor	0.87
Imax70,80,90(cd/klm)	781.4, 152.7, 3.9
No. in Project	1

Luminaire K Data



Supplier	Urbis Schreder
Type	AXIA 3.3 5294 Integrated lenses 64 OSOLON SQUARE GIANT@500mA
Lamp(s)	64 OSOLON SQUARE GIANT@500mA NW 740 230V
LampFlux(klm)/Colour	14.25 NW 4000K/70
File Name	AXIA 3.3 5294 64 OSOLON SQUARE GIANT 500mA NW 740 94W 441012 Integrated le...
Maintenance Factor	0.87
Imax70,80,90(cd/klm)	613.3, 21.0, 0.0
No. in Project	1

Luminaire L Data



Supplier	TRT Lighting
Type	VIA ASY 418mA PCA LED
Lamp(s)	42 0006 0000 100
Lamp Flux (klm)	0.23
File Name	VIA_ASY_418mA_225LM_PCA.ies
Maintenance Factor	0.87
Imax70,80,90(cd/klm)	601.4, 384.8, 53.4
No. in Project	57

Layout

ID	Type	X	Y	Height	Angle	Tilt	Cant	Out-reach	Target X	Target Y	Target Z
1	F	720504.74	722571.60	5.00	128.00	5.00	0.00	0.40			
2	F	720469.77	722551.81	5.00	117.00	5.00	0.00	0.40			
3	G	720457.11	722564.73	8.00	292.00	5.00	0.00	0.40			
4	G	720486.35	722579.95	8.00	298.00	5.00	0.00	0.40			
5	G	720510.76	722601.56	8.00	309.00	5.00	0.00	0.40			
6	A	720520.29	722576.18	6.00	224.00	0.00	0.00	0.40			
7	B	720524.53	722589.03	5.00	109.00	0.00	0.00	0.40			
8	B	720532.14	722600.94	5.00	223.00	0.00	0.00	0.40			
9	A	720545.09	722550.06	6.00	210.00	0.00	0.00	0.40			
10	A	720557.16	722523.05	6.00	197.00	0.00	0.00	0.40			
11	A	720570.35	722496.60	6.00	200.00	0.00	0.00	0.40			
12	A	720570.59	722532.16	6.00	311.00	0.00	0.00	0.40			
13	A	720584.37	722517.58	6.00	137.00	0.00	0.00	0.40			
14	A	720591.32	722550.22	6.00	305.00	0.00	0.00	0.40			
15	A	720610.38	722540.17	6.00	138.00	0.00	0.00	0.40			
16	A	720570.62	722476.36	6.00	34.00	0.00	0.00	0.40			
17	A	720582.45	722487.96	6.00	308.00	0.00	0.00	0.40			
18	A	720603.53	722506.21	6.00	316.00	0.00	0.00	0.40			
19	A	720625.37	722525.15	6.00	308.00	0.00	0.00	0.40			
20	A	720637.97	722507.82	6.00	44.00	0.00	0.00	0.40			
21	A	720666.49	722490.80	6.00	48.00	0.00	0.00	0.40			
22	A	720686.71	722467.54	6.00	48.00	0.00	0.00	0.40			
23	A	720705.85	722444.16	6.00	42.00	0.00	0.00	0.40			
24	A	720724.61	722416.17	6.00	39.00	0.00	0.00	0.40			
25	A	720736.90	722424.65	6.00	210.00	0.00	0.00	0.40			
26	A	720562.01	722457.09	6.00	127.00	0.00	0.00	0.40			
27	A	720527.31	722438.21	6.00	120.00	0.00	0.00	0.40			
28	A	720497.19	722427.41	6.00	299.00	0.00	0.00	0.40			
29	A	720521.39	722426.56	6.00	27.00	0.00	0.00	0.40			
30	A	720541.98	722410.76	6.00	212.00	0.00	0.00	0.40			
31	A	720547.14	722383.95	6.00	30.00	0.00	0.00	0.40			
32	A	720536.87	722370.61	6.00	290.00	0.00	0.00	0.40			
33	A	720570.34	722370.95	6.00	209.00	0.00	0.00	0.40			
34	A	720566.26	722349.49	6.00	26.00	0.00	0.00	0.40			
35	A	720587.93	722343.64	6.00	228.00	0.00	0.00	0.40			
36	A	720512.71	722342.20	6.00	106.00	0.00	0.00	0.40			

Layout Continued

ID	Type	X	Y	Height	Angle	Tilt	Cant	Out-reach	Target X	Target Y	Target Z
37	A	720545.22	722356.31	6.00	283.00	0.00	0.00	0.40			
38	A	720490.59	722336.54	6.00	298.00	0.00	0.00	0.40			
39	D	720572.79	722391.37	6.00	298.00	0.00	0.00	0.40			
40	D	720595.29	722405.39	6.00	297.00	0.00	0.00	0.40			
41	C	720612.01	722382.02	6.00	120.00	0.00	0.00	0.40			
42	B	720594.25	722378.74	5.00	34.00	0.00	0.00	0.40			
43	A	720469.63	722412.96	6.00	303.00	0.00	0.00	0.40			
44	A	720446.69	722387.04	6.00	120.00	0.00	0.00	0.40			
45	L	720582.96	722458.55	1.00	222.00	0.00	0.00	0.00			
46	A	720597.49	722469.77	6.00	225.00	0.00	0.00	0.40			
47	A	720620.46	722442.78	6.00	219.00	0.00	0.00	0.40			
48	A	720643.45	722421.06	6.00	219.00	0.00	0.00	0.40			
49	A	720660.25	722396.77	6.00	213.00	0.00	0.00	0.40			
50	A	720679.32	722375.73	6.00	232.00	0.00	0.00	0.40			
51	B	720661.17	722425.81	5.00	304.00	0.00	0.00	0.40			
52	B	720682.17	722432.81	5.00	301.00	0.00	0.00	0.40			
53	B	720696.10	722449.52	5.00	308.00	0.00	0.00	0.40			
54	L	720589.83	722452.94	1.00	230.00	0.00	0.00	0.00			
55	L	720596.52	722448.29	1.00	223.00	0.00	0.00	0.00			
56	L	720602.24	722443.11	1.00	222.00	0.00	0.00	0.00			
57	L	720606.22	722435.45	1.00	209.00	0.00	0.00	0.00			
58	L	720610.57	722428.44	1.00	219.00	0.00	0.00	0.00			
59	L	720615.59	722421.63	1.00	222.00	0.00	0.00	0.00			
60	L	720621.30	722414.40	1.00	222.00	0.00	0.00	0.00			
61	B	720736.71	722434.88	5.00	300.00	0.00	0.00	0.40			
62	B	720745.14	722446.17	5.00	34.00	0.00	0.00	0.40			
63	B	720730.50	722466.03	5.00	41.00	0.00	0.00	0.40			
64	B	720716.26	722484.58	5.00	30.00	0.00	0.00	0.40			
65	B	720702.67	722484.41	5.00	81.00	0.00	0.00	0.40			
66	A	720689.67	722488.28	6.00	213.00	0.00	0.00	0.40			
67	E	720665.41	722506.55	5.00	240.00	0.00	0.00	0.40			
68	E	720645.19	722519.66	5.00	241.00	0.00	0.00	0.40			
69	B	720751.13	722424.91	5.00	225.00	0.00	0.00	0.40			
70	L	720542.53	722524.76	1.00	18.00	0.00	0.00	0.00			
71	L	720523.23	722539.16	1.00	22.00	0.00	0.00	0.00			
72	A	720697.16	722369.76	6.00	296.00	0.00	0.00	0.40			

Layout Continued

ID	Type	X	Y	Height	Angle	Tilt	Cant	Out-reach	Target X	Target Y	Target Z
73	L	720513.80	722549.59	1.00	56.00	0.00	0.00	0.00			
74	A	720727.97	722385.23	6.00	297.00	0.00	0.00	0.40			
75	A	720738.22	722395.62	6.00	31.00	0.00	0.00	0.40			
76	A	720736.69	722364.31	6.00	19.00	0.00	0.00	0.40			
77	A	720748.33	722341.94	6.00	121.00	0.00	0.00	0.40			
R&L 78	A	720799.77	722352.98	5.00	96.00	0.00	0.00	0.40			
79	A	720779.23	722351.03	6.00	94.00	0.00	0.00	0.40			
80	A	720777.51	722344.97	5.00	206.00	0.00	0.00	0.40			
R&L 81	A	720786.98	722326.39	6.00	203.00	0.00	0.00	0.40			
82	A	720793.93	722296.90	6.00	185.00	0.00	0.00	0.40			
83	A	720769.41	722327.02	6.00	24.00	0.00	0.00	0.40			
84	A	720777.94	722303.90	6.00	14.00	0.00	0.00	0.40			
85	A	720787.19	722262.39	6.00	18.00	0.00	0.00	0.40			
86	A	720792.30	722239.50	6.00	6.00	0.00	0.00	0.40			
87	A	720778.17	722221.77	6.00	119.00	0.00	0.00	0.40			
88	A	720751.31	722211.37	6.00	119.00	0.00	0.00	0.40			
89	A	720717.20	722203.37	6.00	302.00	0.00	0.00	0.40			
90	A	720689.62	722186.25	6.00	299.00	0.00	0.00	0.40			
91	A	720663.35	722175.09	6.00	32.00	0.00	0.00	0.40			
92	A	720661.94	722198.83	6.00	222.00	0.00	0.00	0.40			
93	A	720649.28	722219.04	6.00	208.00	0.00	0.00	0.40			
94	A	720627.85	722231.72	6.00	30.00	0.00	0.00	0.40			
95	B	720639.35	722246.91	5.00	139.00	0.00	0.00	0.40			
96	B	720669.35	722276.90	6.00	134.00	0.00	0.00	0.40			
97	B	720642.25	722233.82	5.00	210.00	0.00	0.00	0.40			
98	A	720628.94	722218.48	6.00	307.00	0.00	0.00	0.40			
99	B	720603.40	722194.42	5.00	324.00	0.00	0.00	0.40			
100	A	720596.90	722184.38	6.00	299.00	0.00	0.00	0.40			
101	A	720566.89	722167.34	6.00	292.00	0.00	0.00	0.40			
102	A	720618.64	722200.07	6.00	313.00	0.00	0.00	0.40			
103	A	720731.14	722216.11	6.00	214.00	0.00	0.00	0.40			
104	A	720716.20	722241.32	6.00	217.00	0.00	0.00	0.40			
105	A	720693.11	722258.54	6.00	37.00	0.00	0.00	0.40			
106	A	720692.37	722285.97	6.00	205.00	0.00	0.00	0.40			
107	A	720714.34	722265.50	6.00	119.00	0.00	0.00	0.40			
108	A	720677.47	722283.70	6.00	23.00	0.00	0.00	0.40			

Layout Continued

ID	Type	X	Y	Height	Angle	Tilt	Cant	Out-reach	Target X	Target Y	Target Z
109	A	720682.20	722313.79	6.00	191.00	0.00	0.00	0.40			
110	B	720653.89	722261.45	6.00	134.00	0.00	0.00	0.40			
111	A	720610.12	722343.94	6.00	313.00	0.00	0.00	0.40			
112	A	720619.68	722328.42	6.00	133.00	0.00	0.00	0.40			
113	A	720644.73	722346.57	6.00	226.00	0.00	0.00	0.40			
114	A	720640.46	722328.80	6.00	51.00	0.00	0.00	0.40			
115	A	720655.77	722316.34	6.00	51.00	0.00	0.00	0.40			
116	A	720676.22	722325.97	6.00	272.00	0.00	0.00	0.40			
117	A	720706.83	722318.06	6.00	103.00	0.00	0.00	0.40			
118	A	720721.85	722336.45	6.00	291.00	0.00	0.00	0.40			
119	B	720718.68	722287.19	5.00	38.00	0.00	0.00	0.40			
120	B	720728.50	722300.96	5.00	290.00	0.00	0.00	0.40			
121	B	720747.06	722310.27	5.00	290.00	0.00	0.00	0.40			
122	B	720754.25	722300.96	5.00	196.00	0.00	0.00	0.40			
123	A	720767.69	722290.87	6.00	110.00	0.00	0.00	0.40			
124	A	720739.37	722280.72	6.00	119.00	0.00	0.00	0.40			
125	A	720584.50	722311.84	6.00	312.00	0.00	0.00	0.40			
126	D	720565.12	722293.77	6.00	312.00	0.00	0.00	0.40			
127	D	720546.53	722283.62	6.00	282.00	0.00	0.00	0.40			
128	D	720522.39	722275.30	6.00	287.00	0.00	0.00	0.40			
129	B	720594.14	722299.74	5.00	142.00	0.00	0.00	0.40			
130	B	720611.33	722314.31	5.00	130.00	0.00	0.00	0.40			
131	A	720579.59	722268.44	6.00	220.00	0.00	0.00	0.40			
132	A	720571.44	722254.46	6.00	40.00	0.00	0.00	0.40			
133	A	720512.47	722260.69	6.00	103.00	0.00	0.00	0.40			
134	B	720750.39	722404.25	5.00	211.00	0.00	0.00	0.40			
135	A	720588.74	722321.65	6.00	44.00	0.00	0.00	0.40			
136	B	720631.13	722257.49	5.00	310.00	0.00	0.00	0.40			
137	B	720540.55	722265.86	5.00	107.00	0.00	0.00	0.40			
138	B	720661.10	722285.99	5.00	316.00	0.00	0.00	0.40			
139	B	720646.36	722271.79	5.00	316.00	0.00	0.00	0.40			
140	E	720640.00	722289.97	5.00	126.00	0.00	0.00	0.00			
141	E	720629.70	722295.70	5.00	301.00	0.00	0.00	0.00			
142	E	720612.90	722287.32	5.00	316.00	0.00	0.00	0.00			
143	E	720608.03	722269.87	5.00	42.00	0.00	0.00	0.00			
144	E	720623.71	722274.70	5.00	132.00	0.00	0.00	0.00			

Layout Continued

ID	Type	X	Y	Height	Angle	Tilt	Cant	Out-reach	Target X	Target Y	Target Z
145	E	720643.40	722299.34	5.00	212.00	0.00	0.00	0.40			
146	H	720657.60	722285.97	1.00	44.00	0.00	0.00	0.10			
147	H	720655.45	722288.33	1.00	47.00	0.00	0.00	0.10			
148	H	720653.18	722290.63	1.00	39.00	0.00	0.00	0.10			
149	H	720651.24	722292.78	1.00	47.00	0.00	0.00	0.10			
150	H	720624.51	722253.01	1.00	226.00	0.00	0.00	0.10			
151	H	720622.25	722255.30	1.00	226.00	0.00	0.00	0.10			
152	H	720620.13	722257.51	1.00	226.00	0.00	0.00	0.10			
153	H	720617.93	722259.98	1.00	226.00	0.00	0.00	0.10			
154	B	720526.75	722250.82	5.00	226.00	0.00	0.00	0.40			
155	B	720542.63	722235.08	5.00	226.00	0.00	0.00	0.40			
156	B	720559.82	722218.20	5.00	226.00	0.00	0.00	0.40			
157	B	720570.63	722217.16	5.00	336.00	0.00	0.00	0.40			
158	B	720565.24	722201.79	5.00	78.00	0.00	0.00	0.40			
159	B	720539.15	722256.02	5.00	105.00	0.00	0.00	0.40			
160	B	720550.72	722204.39	5.00	358.00	0.00	0.00	0.40			
161	B	720585.36	722208.23	5.00	139.00	0.00	0.00	0.40			
162	B	720598.05	722220.87	5.00	139.00	0.00	0.00	0.40			
163	B	720612.76	722239.67	5.00	111.00	0.00	0.00	0.40			
164	B	720589.39	722236.35	5.00	57.00	0.00	0.00	0.40			
165	B	720588.63	722227.95	5.00	313.00	0.00	0.00	0.40			
166	B	720614.61	722247.29	5.00	38.00	0.00	0.00	0.40			
167	B	720598.64	722244.88	5.00	218.00	0.00	0.00	0.40			
168	B	720612.89	722239.37	5.00	287.00	0.00	0.00	0.40			
169	D	720561.49	722197.68	5.00	214.00	0.00	0.00	0.40			
170	B	720556.69	722261.05	5.00	105.00	0.00	0.00	0.40			
171	B	720668.15	722304.55	5.00	0.00	0.00	0.00	0.40			
172	I	720442.56	722380.65	8.00	201.00	0.00	0.00	0.50			
173	I	720457.25	722351.35	8.00	211.00	0.00	0.00	0.50			
174	I	720436.37	722407.70	8.00	193.00	0.00	0.00	0.50			
175	A	720426.44	722372.97	6.00	113.00	0.00	0.00	0.50			
176	I	720478.63	722315.20	8.00	206.00	0.00	0.00	0.50			
177	I	720492.23	722289.39	8.00	206.00	0.00	0.00	0.50			
178	I	720511.43	722251.46	8.00	206.00	0.00	0.00	0.50			
179	I	720528.89	722225.10	8.00	222.00	0.00	0.00	0.50			
180	I	720548.57	722200.39	8.00	206.00	0.00	0.00	0.50			

Layout Continued

ID	Type	X	Y	Height	Angle	Tilt	Cant	Out-reach	Target X	Target Y	Target Z
181	I	720563.37	722168.66	8.00	208.00	0.00	0.00	0.50			
182	I	720571.41	722143.99	8.00	200.00	0.00	0.00	0.50			
183	J	720822.95	722343.22	10.00	194.00	5.00	0.00	0.50			
184	K	720815.79	722383.03	10.00	184.00	5.00	0.00	0.50			
185	L	720577.50	722464.68	1.00	222.00	0.00	0.00	0.00			
186	L	720627.61	722407.99	1.00	222.00	0.00	0.00	0.00			
187	L	720624.78	722393.12	1.00	319.00	0.00	0.00	0.00			
188	L	720628.74	722397.88	1.00	309.00	0.00	0.00	0.00			
189	L	720638.63	722407.53	1.00	311.00	0.00	0.00	0.00			
190	L	720627.82	722402.69	1.00	13.00	0.00	0.00	0.00			
191	L	720638.75	722394.95	1.00	222.00	0.00	0.00	0.00			
192	L	720643.50	722389.11	1.00	222.00	0.00	0.00	0.00			
193	L	720648.86	722382.01	1.00	222.00	0.00	0.00	0.00			
194	L	720653.56	722375.51	1.00	222.00	0.00	0.00	0.00			
195	L	720658.62	722369.37	1.00	222.00	0.00	0.00	0.00			
196	L	720664.61	722362.98	1.00	222.00	0.00	0.00	0.00			
197	L	720671.19	722357.25	1.00	234.00	0.00	0.00	0.00			
198	L	720678.21	722350.78	1.00	222.00	0.00	0.00	0.00			
199	L	720683.79	722344.24	1.00	222.00	0.00	0.00	0.00			
200	L	720681.13	722338.80	1.00	313.00	0.00	0.00	0.00			
201	L	720688.65	722339.39	1.00	125.00	0.00	0.00	0.00			
202	L	720696.08	722342.54	1.00	111.00	0.00	0.00	0.00			
203	L	720703.64	722344.90	1.00	105.00	0.00	0.00	0.00			
204	L	720709.77	722350.00	1.00	292.00	0.00	0.00	0.00			
205	L	720720.90	722352.81	1.00	136.00	0.00	0.00	0.00			
206	L	720715.32	722346.75	1.00	112.00	0.00	0.00	0.00			
207	L	720727.44	722356.25	1.00	108.00	0.00	0.00	0.00			
208	L	720736.24	722358.21	1.00	93.00	0.00	0.00	0.00			
209	L	720750.62	722368.39	1.00	104.00	0.00	0.00	0.00			
210	L	720759.40	722371.03	1.00	100.00	0.00	0.00	0.00			
211	L	720768.36	722370.53	1.00	88.00	0.00	0.00	0.00			
212	L	720760.49	722378.48	1.00	24.00	0.00	0.00	0.00			
213	L	720757.87	722388.12	1.00	27.00	0.00	0.00	0.00			
214	L	720777.58	722373.64	1.00	277.00	0.00	0.00	0.00			
215	L	720786.27	722374.57	1.00	262.00	0.00	0.00	0.00			
216	L	720795.89	722371.83	1.00	248.00	0.00	0.00	0.00			

Layout Continued

ID	Type	X	Y	Height	Angle	Tilt	Cant	Out-reach	Target X	Target Y	Target Z
217	L	720775.12	722366.30	1.00	125.00	0.00	0.00	0.00			
218	L	720767.14	722361.57	1.00	110.00	0.00	0.00	0.00			
219	L	720758.77	722358.89	1.00	97.00	0.00	0.00	0.00			
220	L	720751.69	722358.62	1.00	91.00	0.00	0.00	0.00			
221	L	720663.45	722335.25	1.00	260.00	0.00	0.00	0.00			
222	L	720674.91	722334.90	1.00	283.00	0.00	0.00	0.00			
223	L	720635.56	722404.42	1.00	278.00	0.00	0.00	0.00			
224	L	720638.85	722399.88	1.00	185.00	0.00	0.00	0.00			
225	B	720632.99	722365.93	5.00	320.00	0.00	0.00	0.40			
226	L	720644.12	722373.82	1.00	316.00	0.00	0.00	0.00			
227	L	720536.89	722533.10	1.00	269.00	0.00	0.00	0.00			
228	L	720527.10	722531.93	1.00	47.00	0.00	0.00	0.00			
229	L	720519.34	722546.00	1.00	42.00	0.00	0.00	0.00			
230	L	720507.93	722557.15	1.00	16.00	0.00	0.00	0.00			
231	L	720505.03	722564.87	1.00	19.00	0.00	0.00	0.00			

Horizontal Illuminance (lux)

Grid 1



Results

Eav	5.09
Emin	1.00
Emax	19.19
Emin/Emax	0.05
Emin/Eav	0.20

Horizontal Illuminance (lux)

Grid 2

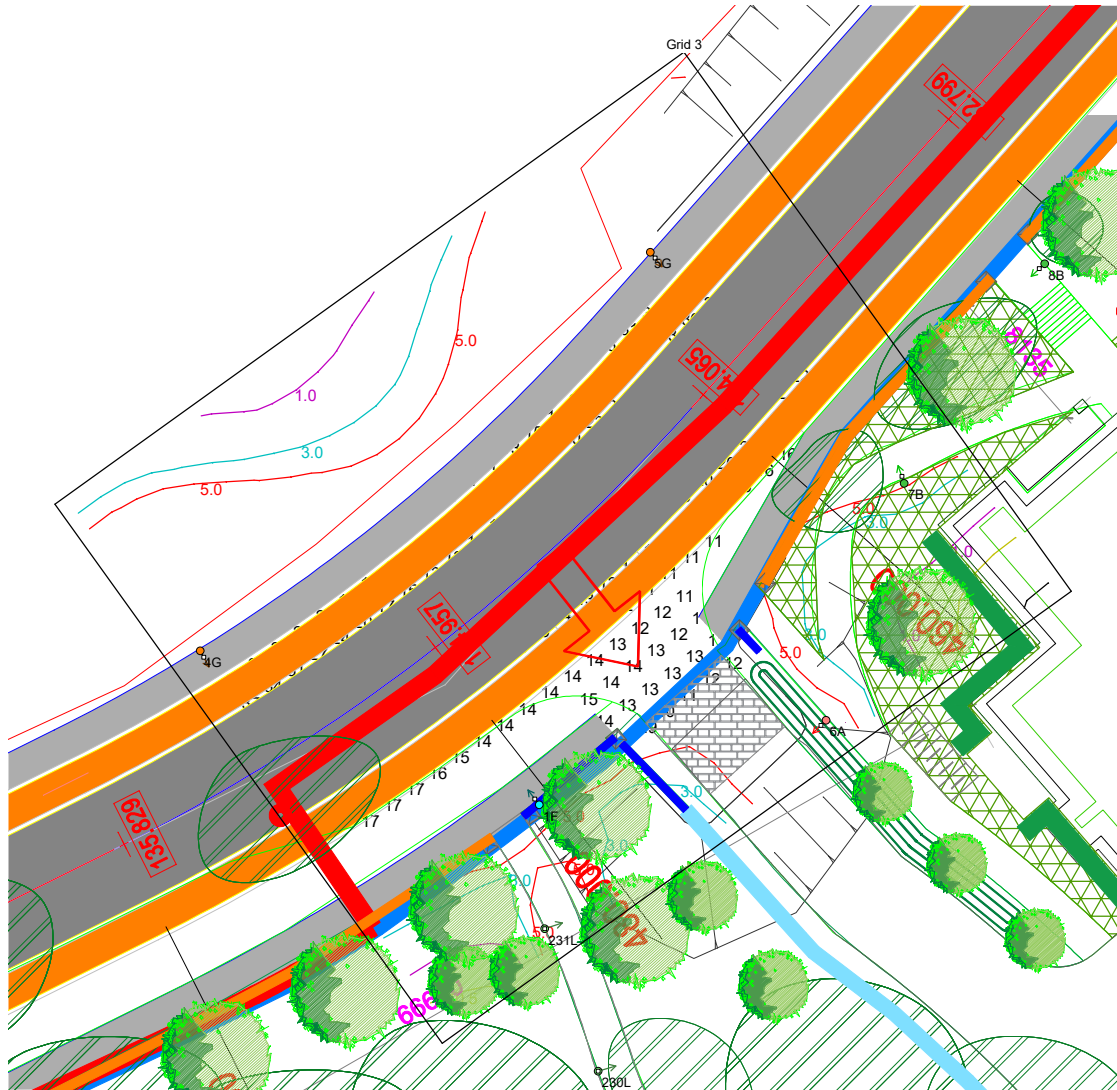


Results

Eav	5.42
Emin	1.06
Emax	26.89
Emin/Emax	0.04
Emin/Eav	0.20

Horizontal Illuminance (lux)

Grid 3

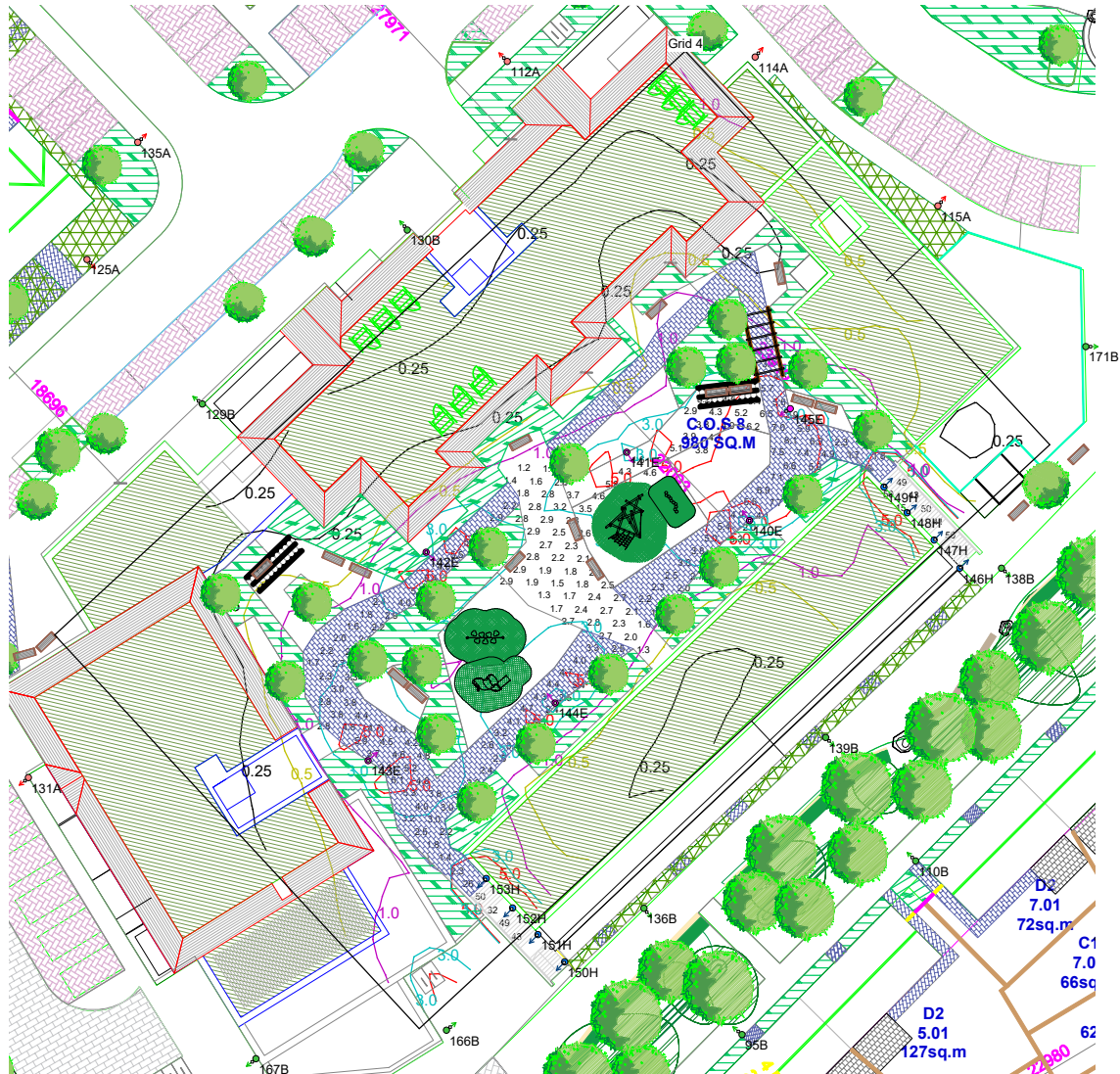


Results

Eav	19.12
Emin	8.68
Emax	38.92
Emin/Emax	0.22
Emin/Eav	0.45

Horizontal Illuminance (lux)

Grid 4

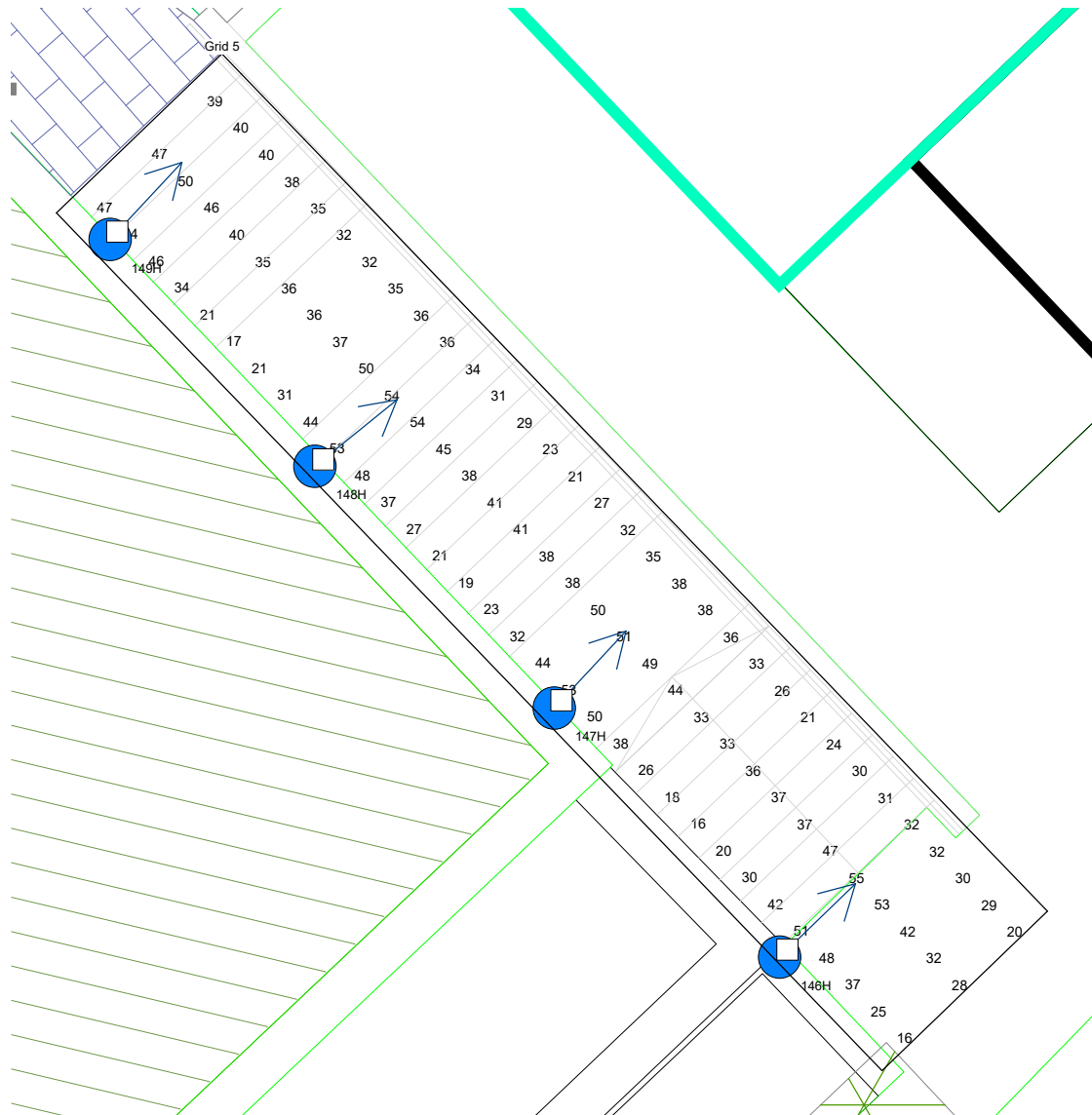


Results

Eav	5.86
Emin	1.14
E _{max}	50.35
E _{min} /E _{max}	0.02
E _{min} /E _{av}	0.19

Horizontal Illuminance (lux)

Grid 5

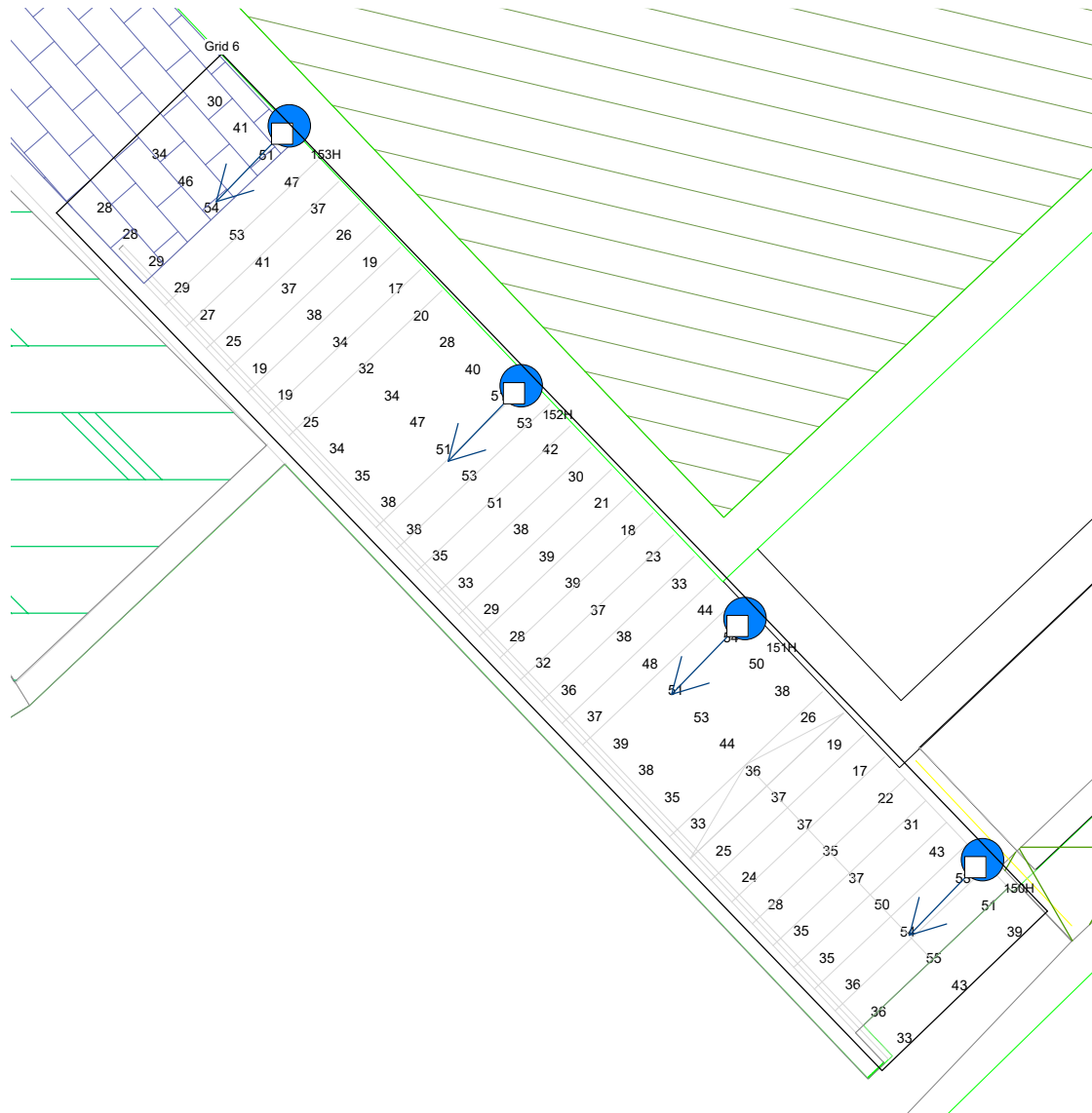


Results

Eav	35.98
Emin	16.06
Emax	55.13
Emin/Emax	0.29
Emin/Eav	0.45

Horizontal Illuminance (lux)

Grid 6



Results

Eav	36.34
Emin	16.85
E _{max}	54.52
E _{min} /E _{max}	0.31
E _{min} /E _{av}	0.46

Horizontal Illuminance (lux)

Grid 7



Results

Eav	14.89
Emin	6.05
Emax	27.30
Emin/Emax	0.22
Emin/Eav	0.41

Horizontal Illuminance (lux)

Grid 8



Results

Eav	10.23
Emin	2.68
Emax	26.08
Emin/Emax	0.10
Emin/Eav	0.26

Horizontal Illuminance (lux)

Grid 9

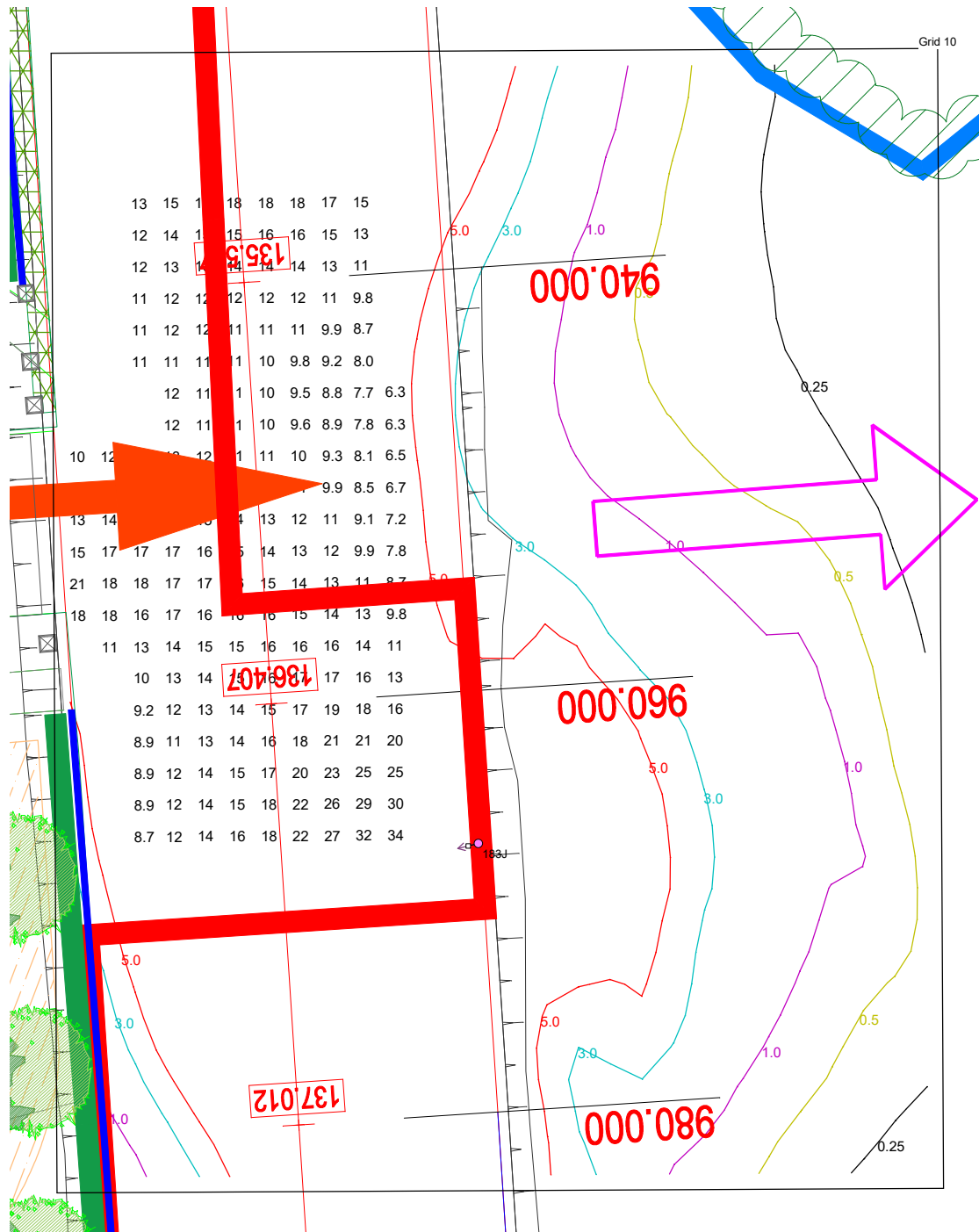


Results

Eav	15.42
Emin	6.31
Emax	29.58
Emin/Emax	0.21
Emin/Eav	0.41

Horizontal Illuminance (lux)

Grid 10

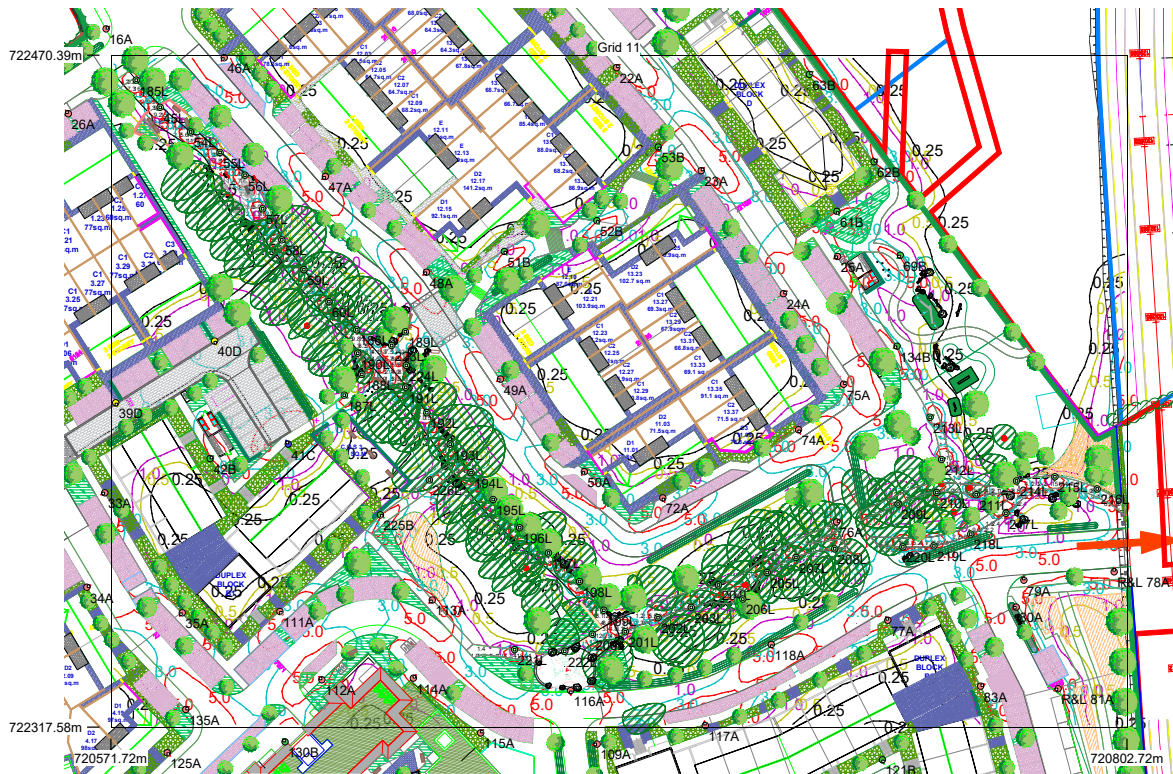


Results

Eav	13.93
Emin	6.31
Emax	33.96
Emin/Emax	0.19
Emin/Eav	0.45

Horizontal Illuminance (lux)

Grid 11



Results

Eav	5.36
Emin	1.05
Emax	16.96
Emin/Emax	0.06
Emin/Eav	0.20